

1-210 Quarter-Turn Pr20.1 L18

Tool operable, IP65, Tapered insert, Optional pre-assembly

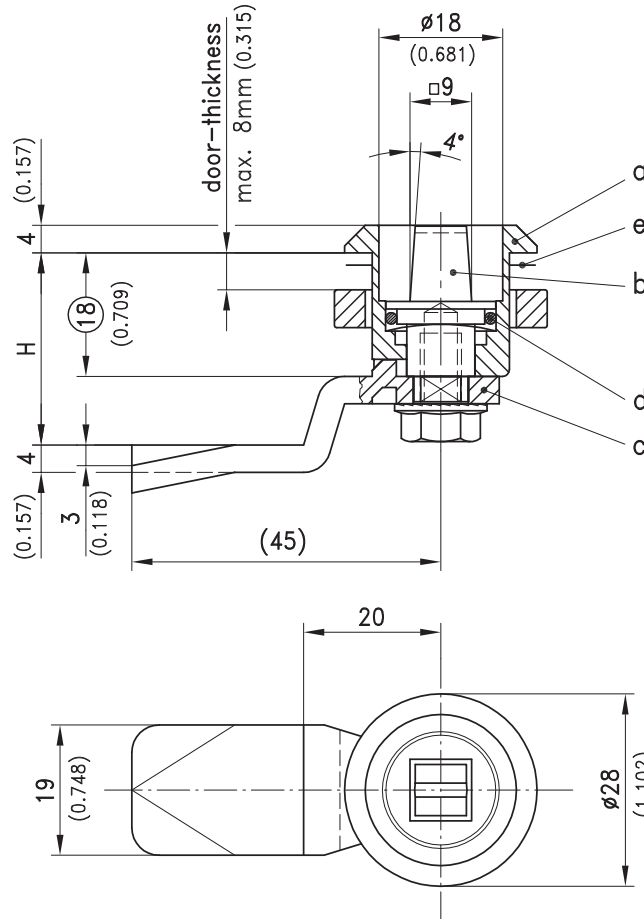


Product Notes:

- RH and LH application
- Water and dust tight according to IP65, DIN EN 60529
- Pre-assembled Quarter-Turn can be installed in cutout
- Components can be pre-assembled by DIRAK upon request
- "Bern" key operation

Material:

- **Housing:** Zinc Die, Chrome Plated or Black
- **Insert:** Steel, Zinc Plated, or Zinc Die, Chrome Plated
- **Cam:** Steel, Zinc Plated



a) Housing with nut	Zinc Die Chrome Plated	Zinc Die Black	See Page
	200-9065	200-9086	
Housings with longer bodies and different head diameters on request.			
b) Insert steel (zinc plated)	200-9175	200-9175	
b1) Insert Zinc Die (Chrome Plated)	200-9138	200-9138	
c) Cam			01.101, 01.102
Optional:			
Water and dust tight according to IP65 by:			
d) O-ring 12x2mm	200-1001	200-1001	
e) Flat external seal	200-0901	200-0901	
f) Assembling of cam	200-0001	200-0001	
Assembling of cam, with O-ring	200-0002	200-0002	